



3Dfactories

MAKE IT REAL - MAKE IT USEFUL

Profi3DTower

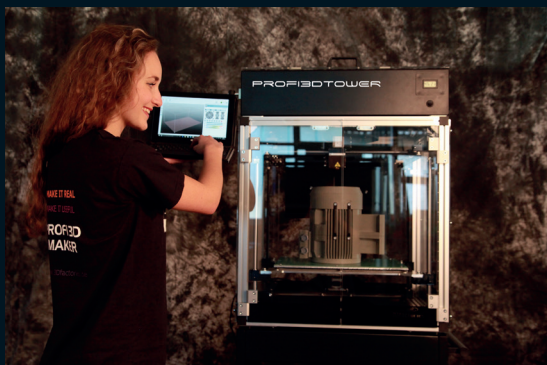
Hybrid 2-coloured parts in 3D – industrial design for professional use.



PROFI3DTOWER



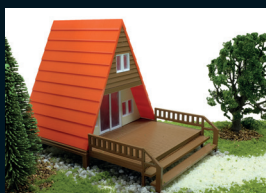
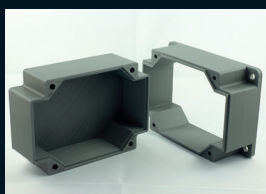
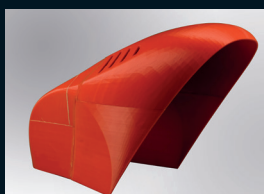
Professional applications



Shorten your development time: You can immediately implement your drafts into real products. Very low modelling costs enable a considerable reduction of the development costs. Show your customer models instead of drawings!

The printers from 3Dfactories are featuring economic feasibility and a solid process control. You will appreciate the innovative design and constructional improvements of the Profi3DTower for a long time. Enjoy constructional freedom through soluble or easy removable supports.

Print soft and hard materials in one process. This way you can achieve the effect of a hinge joint, of a gasket or insulating properties. In a few minutes you can easily change the colour or material properties without extra cleaning or use of separate tools.



TECHNICAL SPECIFICATIONS:

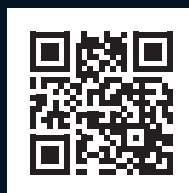
Build volume:	340 x 260 x 400 mm (x, y, z) (In dual use the X-axis is about 70 mm shorter)
Print volume:	35.360 cm ³
Layer thickness:	0,08 - 0,7 mm
Dimensions printer:	700 x 600 x 710 mm (L, B, H)
Weight:	38 kg
Max. print speed:	80 mm/s
Max. movement speed:	230 mm/s
Electrical power supply:	24 V / 220 W + 24 V / 120 W
Certification:	CE / WEEE
Filaments:	PLA, H-PLA, ABS, ASA, PET-G and many more
Soluble support materials:	HIPS, PVA

PACKAGE CONTENT:

- Dual-Head with two extruders up to ca. 250° C
- Print bed heating
- Closed housing
- USB cable
- Slicer-Software in several languages
- CD with driver
- Software
- Manual in English or German
- Tools
- Power supply: 2 x 230 V / 24 V

UPGRADES:

- Base frame with feet or wheels
- Thermal environment top piece with air condition and regulation
- Coil base
- Notebook
- Notebook attachment
- Preinstalled Software, set-up
- Air filtration of the build area
- Training [also at your site], seminars



Subject to modifications